

# COMITROL® PROCESSOR MODEL 9300 WITH FEEDER

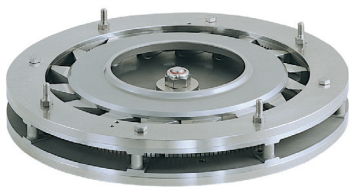
## HIGH CAPACITY, CONTROLLED PARTICLE SIZE REDUCTION

The Comitrol® Processor Model 9300 is equipped with the 12" (304.8 mm) diameter Microcut Head and is available in a pump-fed or screw-fed model. The Microcut Head combined with a powerful motor produces the ultimate particle size reduction in terms of precision and capacity. The 9300 is recommended for slurry, paste, or liquid applications. Sold to process a variety of items including nut milks, fruit purees, baby food, nut butters, polymers, vegetable juices, meat, poultry, meat/poultry by-products, soy bean reductions, and reduction of active pharmaceutical ingredients. Choose between the 9300 equipped with a screw feeder or the pump-fed version.

Generally, maximum input size in any dimension should not exceed 3/8" (9.5 mm). Both models feature continuous operation for uninterrupted production and are designed for easy cleanup and maintenance.



### TYPES OF CUTS



#### Microcut Head

Utilizes 12" (304.8 mm) diameter Microcut Head to produce particle sizes ranging from coarse to fine emulsions. To ensure the proper combination of cutting parts, Urschel recommends a free-of-charge test cut of your application. Contact Urschel for more information.



**1 ALMOND MILK**



**2 DELI MUSTARD**



**3 PEA PUREE**



**4 PEANUT BUTTER**



**5 PHARMACEUTICAL MILLING**



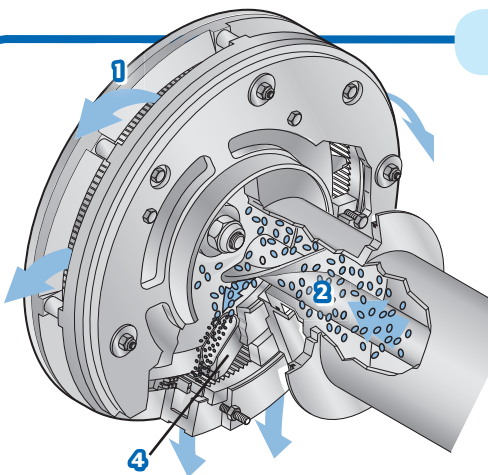
**6 SOY MILK**



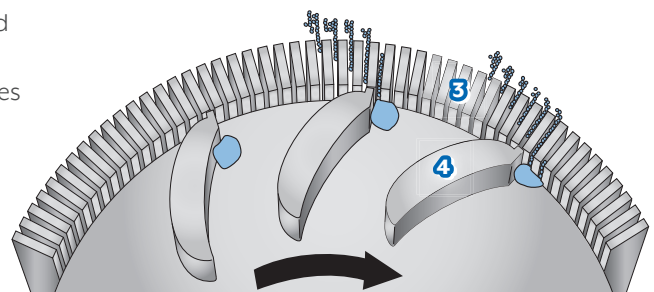
**7 VEGETABLE JUICE**

NOTE: Products that are explosive or create a potentially explosive atmosphere should not be processed by any standard Urschel machine. A potentially explosive atmosphere could be created if processing your product creates fumes or dust in sufficient concentrations. In such cases, customers may work with Urschel to develop a customized solution through a certified print (CP) process.

### CUTTING OVERVIEW



1. Microcut Head
2. Feed Screw
3. Microcut Blades
4. Impeller



If your product application is not mentioned on this page, contact your local Urschel representative to determine the most effective solution to your size reduction needs.

# COMITROL® PROCESSOR MODEL 9300 WITH FEEDER

Measurements and weights may vary depending on machine configuration.

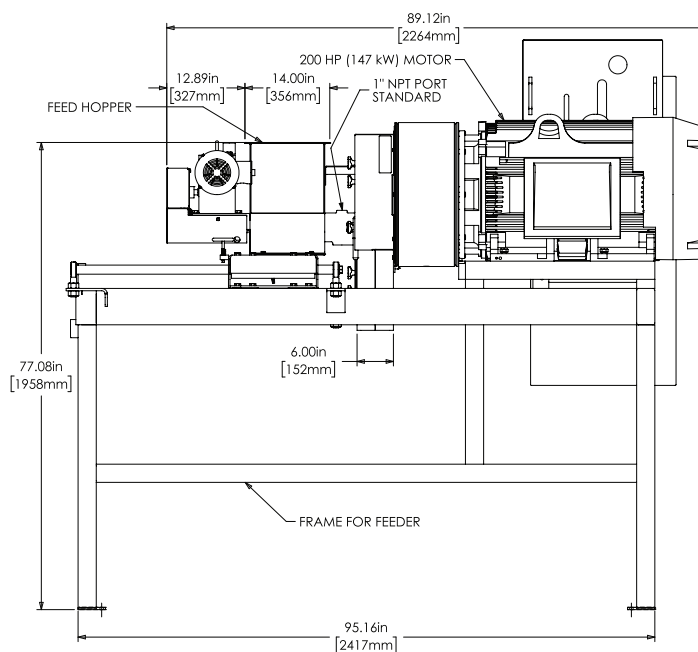
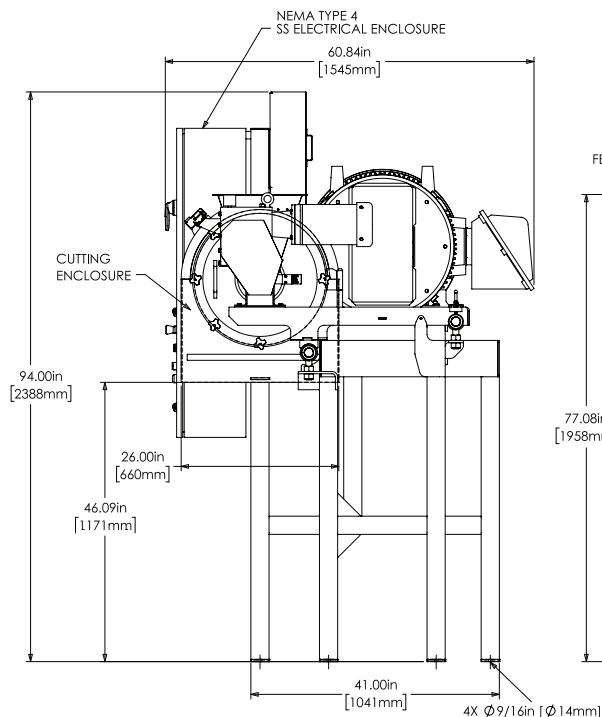
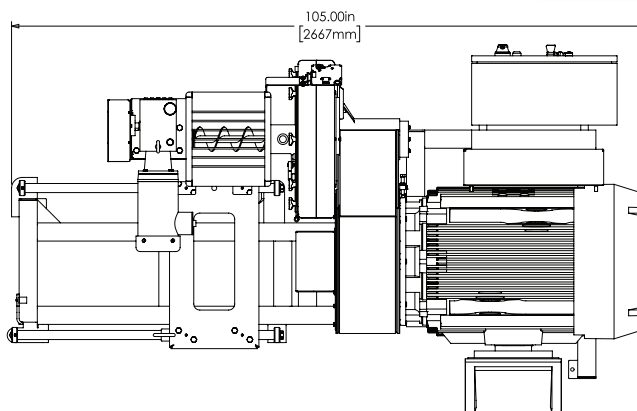
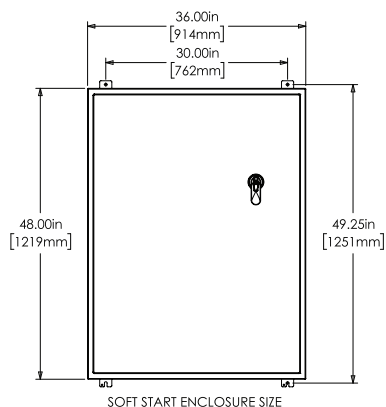
**Length:**.....105.00" (2667 mm)

**Width:**.....60.84" (1545 mm)

**Height:**.....94.00" (2388 mm)

**Net Weight:** .....3900 lb (1769 kg)

**Motors:**.....Impeller –  
150 or 200 HP  
(112 or 149.1 kW)  
.....Screw Feeder –  
2 HP (1.5 kW)



**PUT URSCHEL TO THE TEST** Schedule a comprehensive, no-obligation test cut of your product.

**COMITROL®**  
BY **URSCHEL** THE SIZE REDUCTION SPECIALISTS



**URSCHEL®**  
The Global Leader in Food Cutting Technology  
www.urschel.com | ✉ info@urschel.com